



Model OTOHP-NMS Network Management System



Firmware Update Instructions

24926 Highway 108
Sierra Village, CA 95346
Phone: (800) 545-1022
Fax: (209) 586-1022

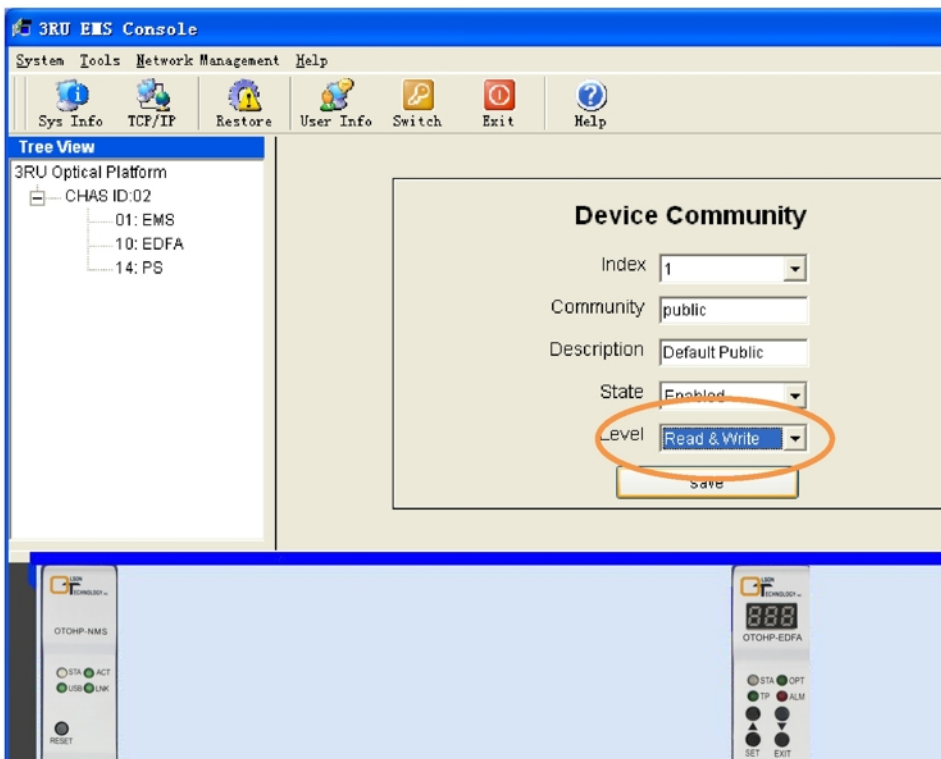
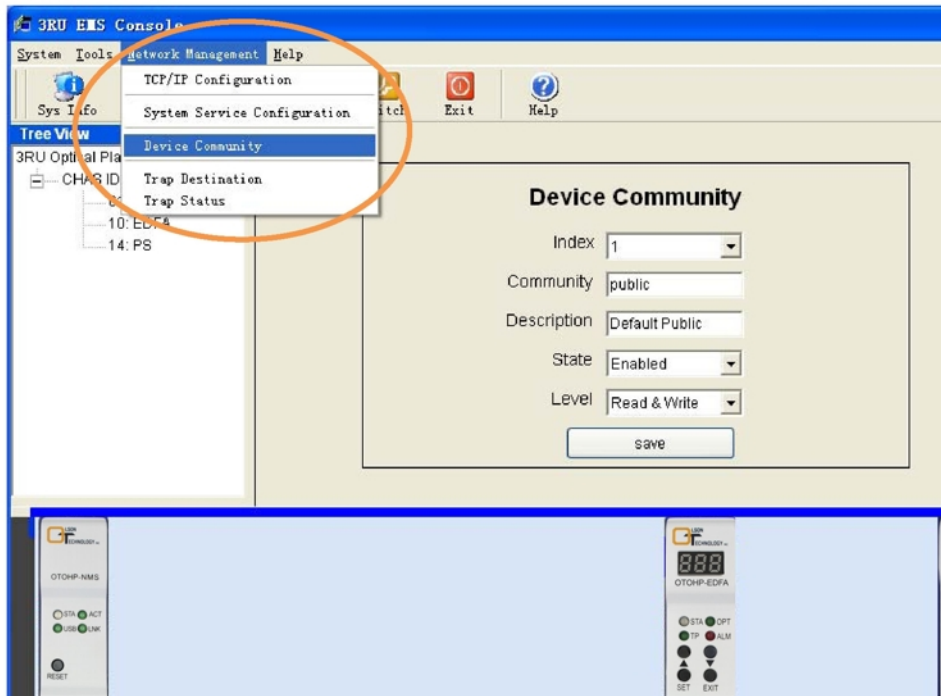
TABLE OF CONTENTS

FIRMWARE UPDATE INSTRUCTIONS	3
Setting Community Level.....	3
Configure the Firmware Update Settings	4
Firmware Update Procedure.....	5

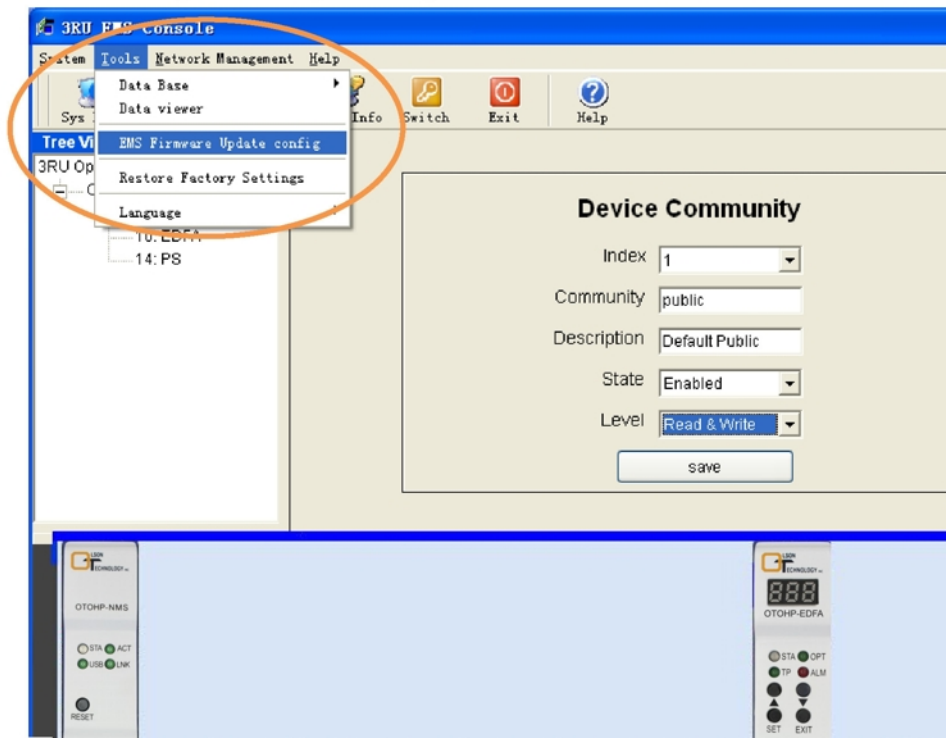
FIRMWARE UPDATE INSTRUCTIONS

Setting Community Level

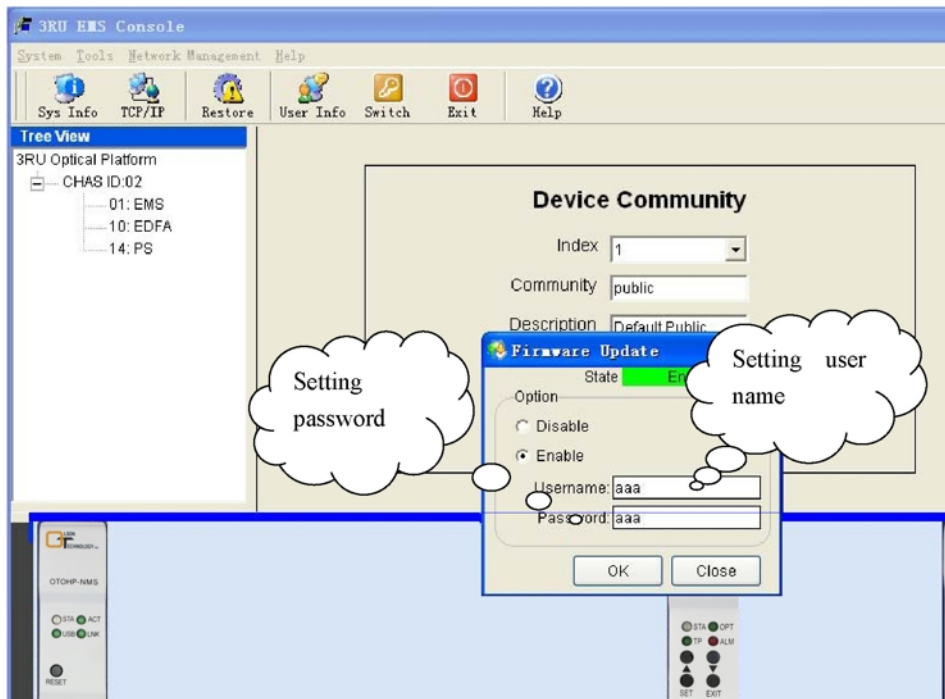
Set the public level to “Read/Write” as shown below.



Configure the Firmware Update Settings

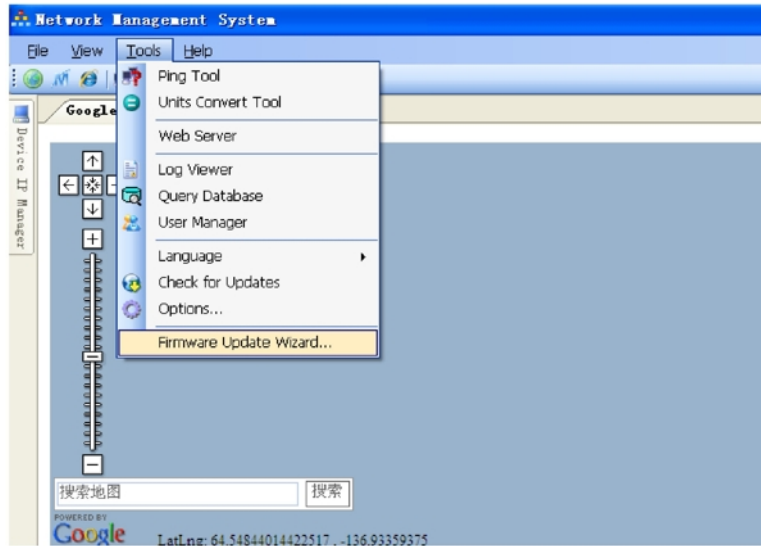


Set the user name and password as shown below.

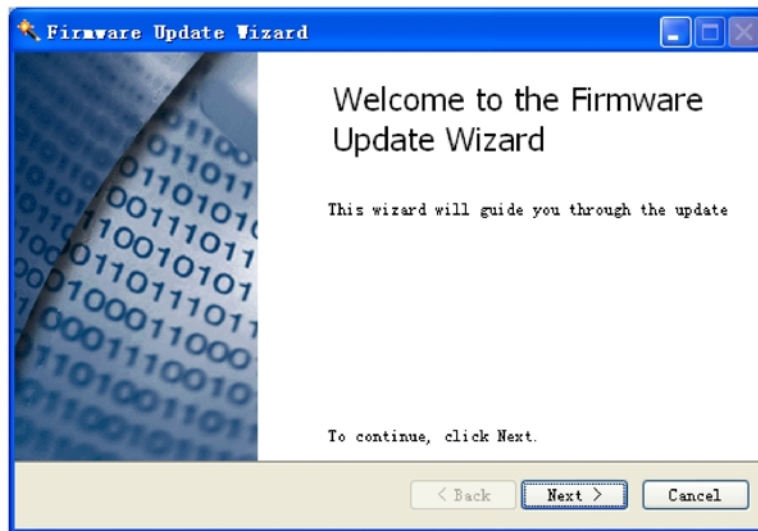


Firmware Update Procedure

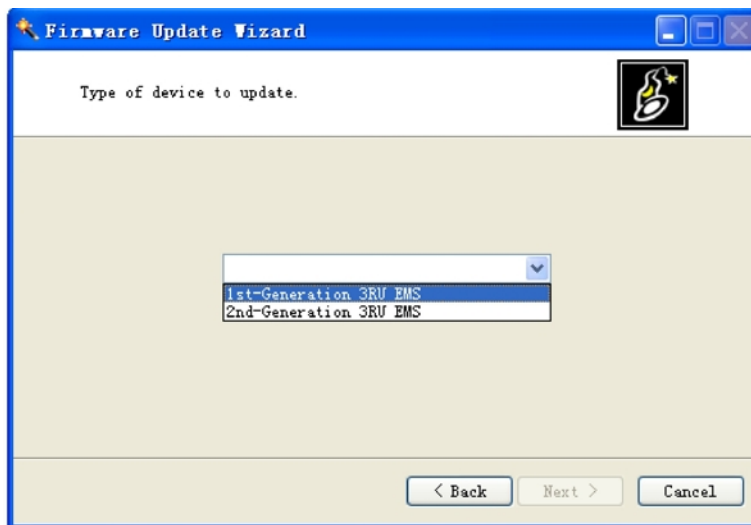
Launch the Network Management System Program then click on “Firmware Update Wizard” under the “Tools” drop down menu to begin the update wizard.



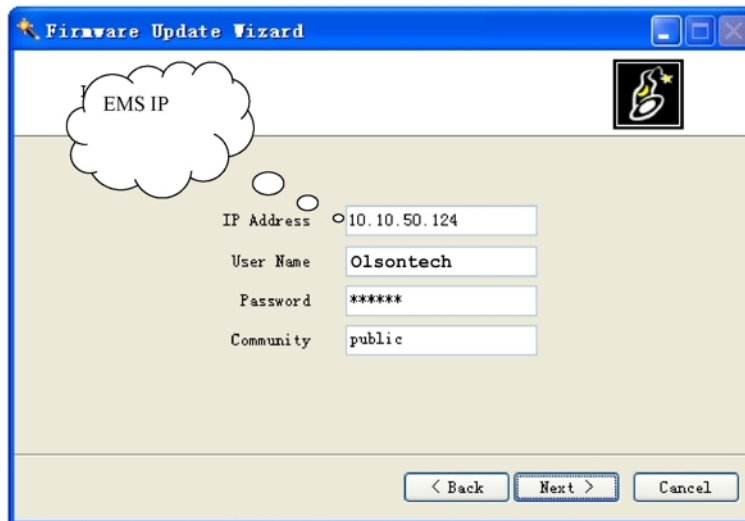
The Firmware Update Wizard interface is shown below.



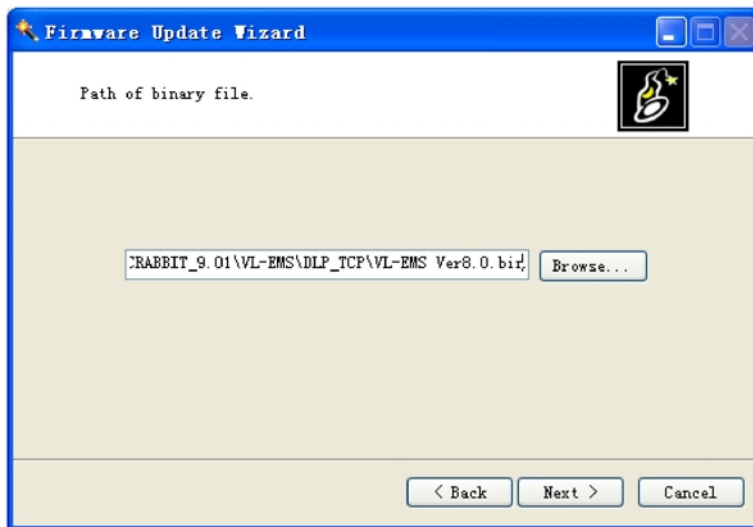
Choose the correct hardware version to be updated.



Fill in the parameters as required.



Choose the “*.bin” file.



Review the settings and click “Next” to begin the update. The screen will show the files being updated. When the update is complete, click “Finish” to exit the update wizard. The firmware update is now correctly installed.

